

Climb The STAIRWAY  
to BRILLIANCE

---

*FULL BODY*  
**STEP & RISER**

## Say Goodbye to conventional Staircases

*Stairs are used in lieu of elevators in buildings or houses and also play a very important role as emergency exit areas in office buildings and commercial spaces. Until today, staircases were built using marbles and granite, which are expensive, require on - site cutting and finishing, leading to a lot of wastage. They need a lot of manual labour for handling and fixing. Besides, they can stain easily, the surface may be slippery and they can chip or crack during use. They are difficult to replace with same shade and texture if broken, besides also needing constant maintenance.*

## Get the Stepping Stone Advantage!

*The Stepping Stone range is a revolutionary way to build staircases with step tiles and risers.*

*The result of an unquantifiable amount of time spent researching the very many possibilities in the world of staircases. At the center of this research, we kept people and a few important questions concerning them -*

**"Will it be safe enough for senior citizens and children to use?"**

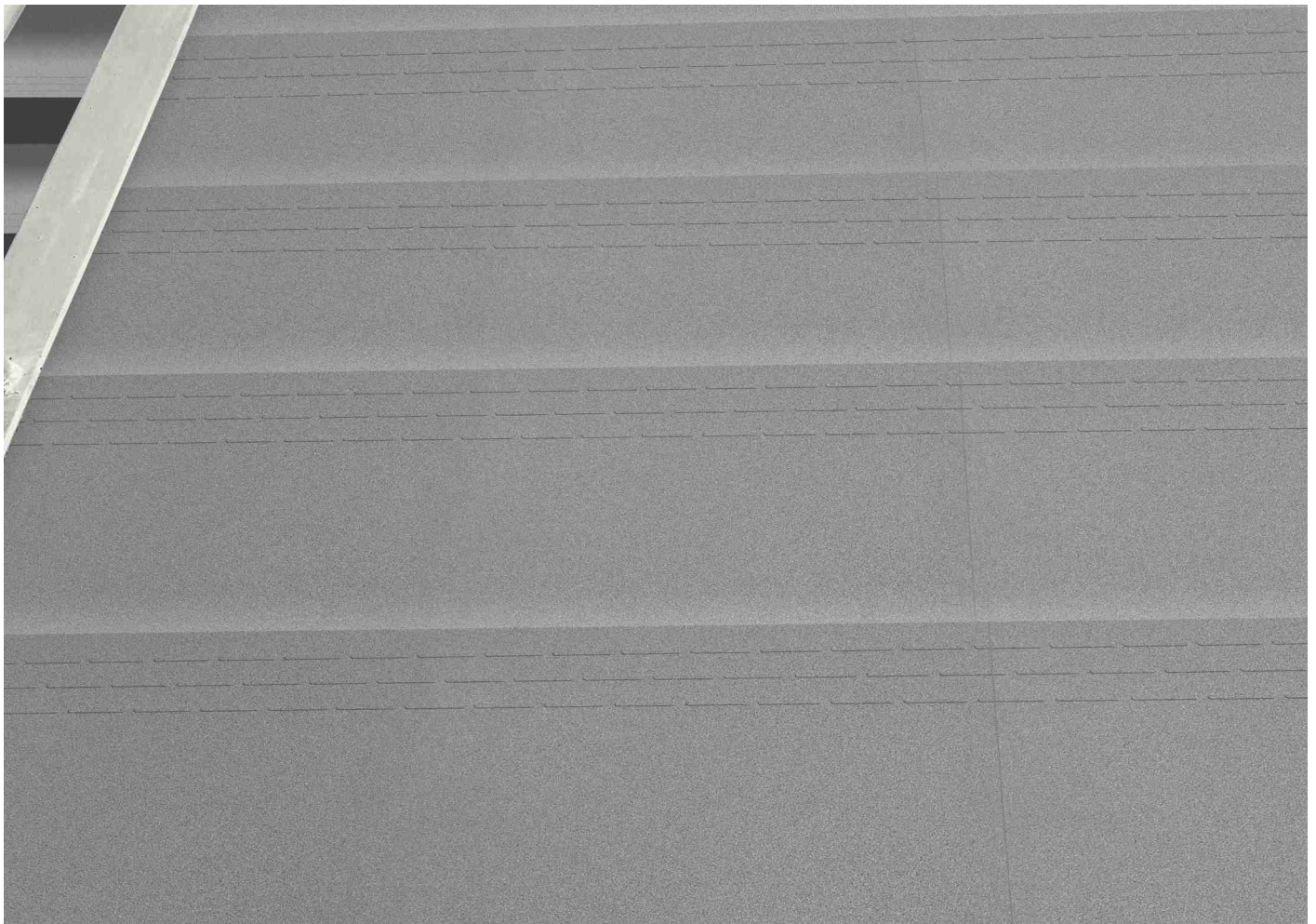
**"Are they safe for use by people with physical and visual disabilities?"**

**"How long would they last before needing a replacement?"**

**"Should durable mean cumbersome installation and frequent maintenance?"**

**"Are they easy to install, without any cumbersome cutting and finishing or wastage?"**

**"Are they non - combustible and safe during a fire emergency?"**



# Here's why it makes more sense to build your Staircases with Stepping Stone

## Safety for All

These full-bodied vitrified tiles come with double nosing and tread lines that make them skid-resistant and much more safer than conventional stairs.

## Faster Installation

No more handling issues. No more labour-intensive on-site installations, no more wastage costs. Stepping Stone can be easily and speedily installed on site.

## Long Lasting & Easy on Maintenance

Chipped and worn out staircases, constant need for polishing and repairs, are all things of the past. Stepping Stone are full-bodied vitrified tiles, which means they absorb very low water and are impervious to weather or wear and tear induced damage. Fit them and forget them for years of trouble free performance.



less than 0.05%  
Water Absorption



Full  
Bull Nosing



Anti Skid



High Flexural  
Strength



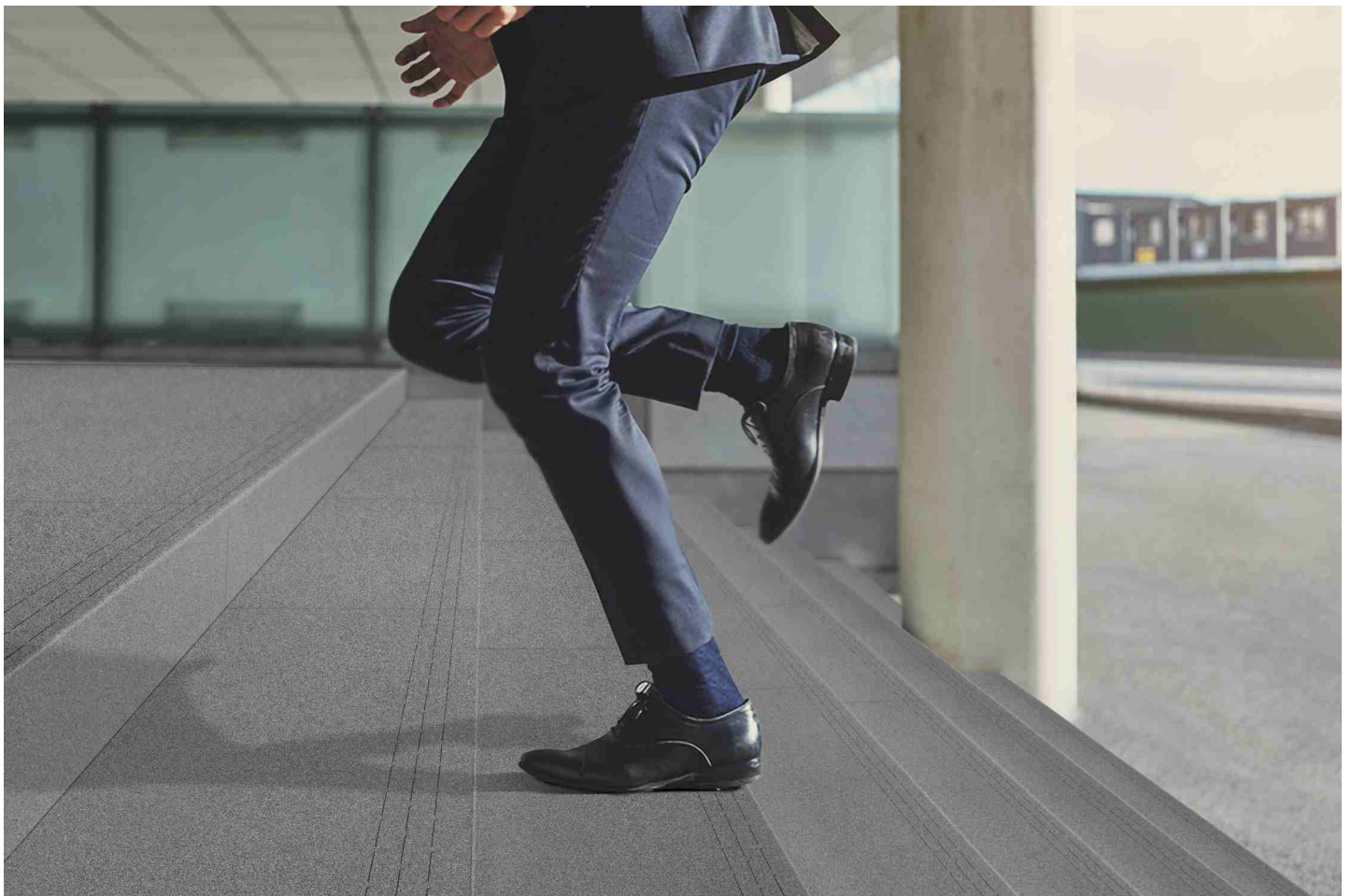
Robust, durable  
tiles than  
conventional options



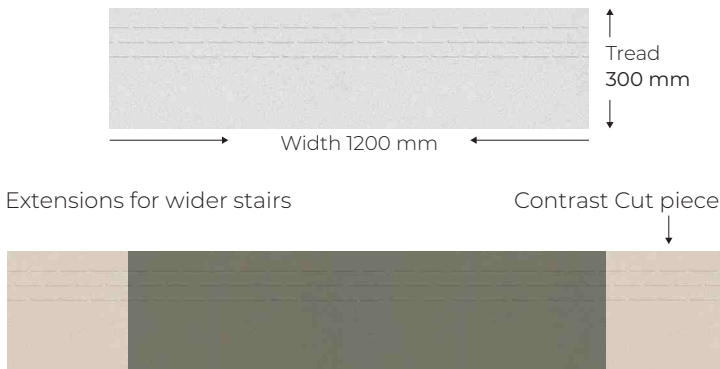
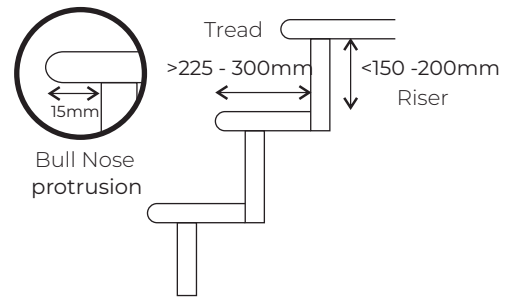
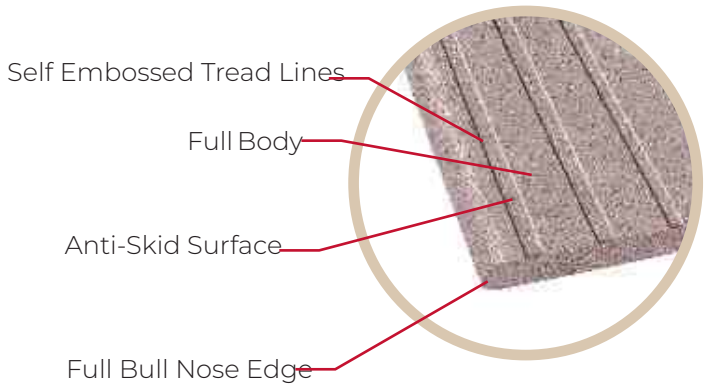
8 Beautiful  
Shades



Faster  
Installation



## India's first double bull nosing fully vitrified Step Tile.

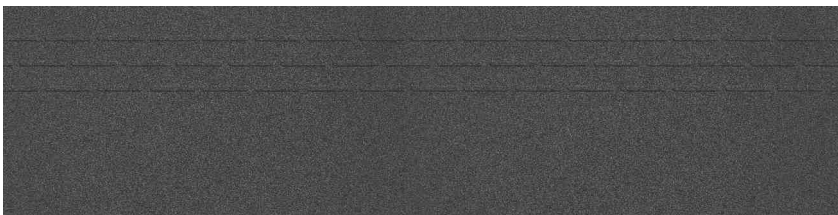
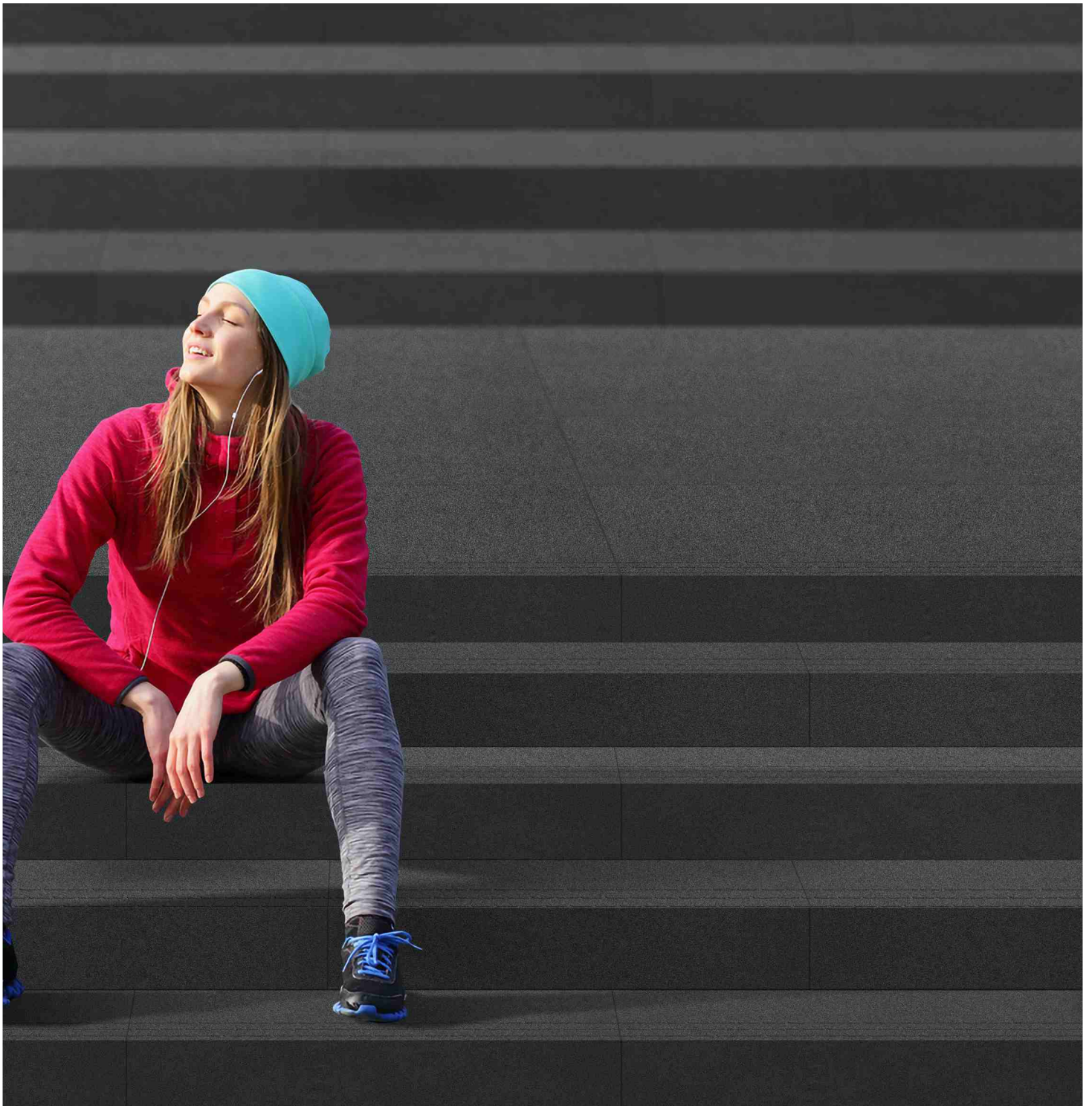


Risers are available through Meteor series in 30 x 120 cm and 1.5 cm thickness. These can be used in full size on landing areas and in cut size as desired for riser use on site depending on the requirement. While the Step tiles are available in a convenient size of 30x120 cm, for stairs requiring higher width, cut - contrast shades can be used on either side to get the wider stairs.

## The Stepping Stone Advantage.

| FEATURE   | BENEFITS  |
|---|---|
| Fully Body Vitrified Step Tiles & Risers                                | Highly durable, ideal for heavy traffic and commercial areas.   |
| Ready to install tiles  | Easy and speedy installation. Say goodbye to cumbersome cutting and finishing on site.  |
| Embossed Tread Lines  | Provide extra grip for higher safety near step edge.  |
| Unique full bull nose edges   | Unlike other step tiles, Armano Stepping Stone is India's first double bull nosing tile, which makes the staircase safer and comfortable to step on. Double bull nosing also helps to prevent chipping from sharp edges and it improves the overall aesthetics of the stairs. |
| 15 mm thickness   | Provides higher strength and durability as desired in big size slabs. An assurance to replace natural stones in a confident way.  |
| Lowest water absorption of <0.05% along with enhanced stain resistance. | Strongest of dyes – methylene blue can not stain Armano Stepping Stone. Impervious surface ensures ease of cleaning.  |
| Highest abrasion resistance of < 144 mm <sup>3</sup>                    | Ensures 10 times superior surface protection against wear and tear over natural stones.   |
| Available in 8 beautiful Salt & Pepper shades.                          | Suits the building theme, décor and desired contrast.   |





Magic Nero - S

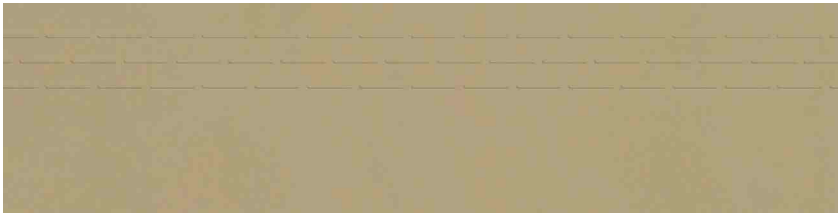


Magic Nero - R

**FULL BODY**  
**STEP & RISER**

also available sizes  
120 x 30cm | 120 x 20cm  
100x30cm | 100x20cm

-   
Impact strength  
and stress resistance
-   
Resistance  
to chemicals
-   
Wear resistance
-   
Scratching  
resistance
-   
Stain  
resistance
-   
Resistance  
to frost



Magic Apricot - S



Magic Apricot - R

**FULL BODY**  
**STEP & RISER**

also available sizes

120 x 30cm | 120 x 20cm

100x30cm | 100x20cm



Impact strength  
and stress resistance



Resistance  
to chemicals



Wear resistance



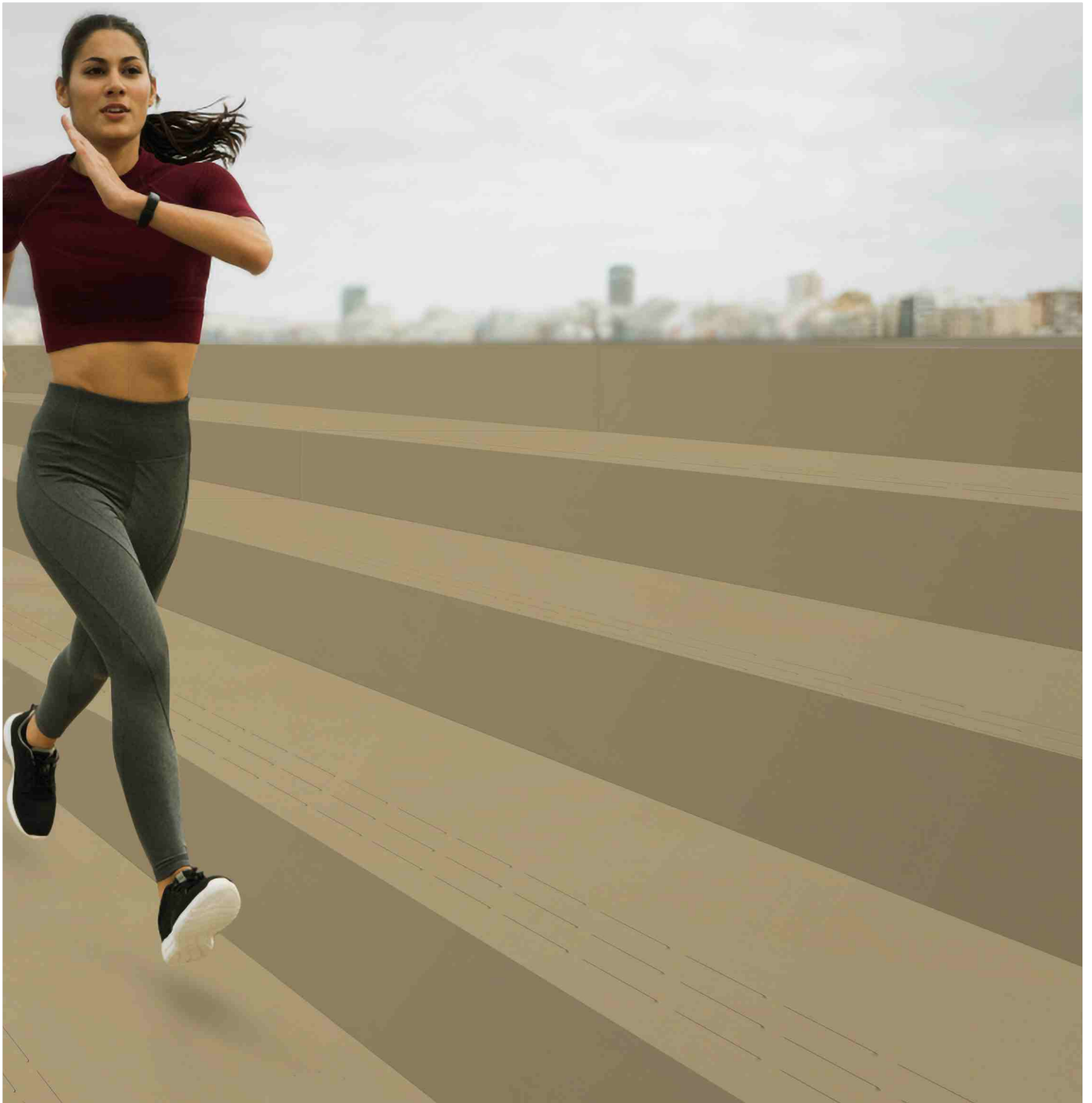
Scratching  
resistance



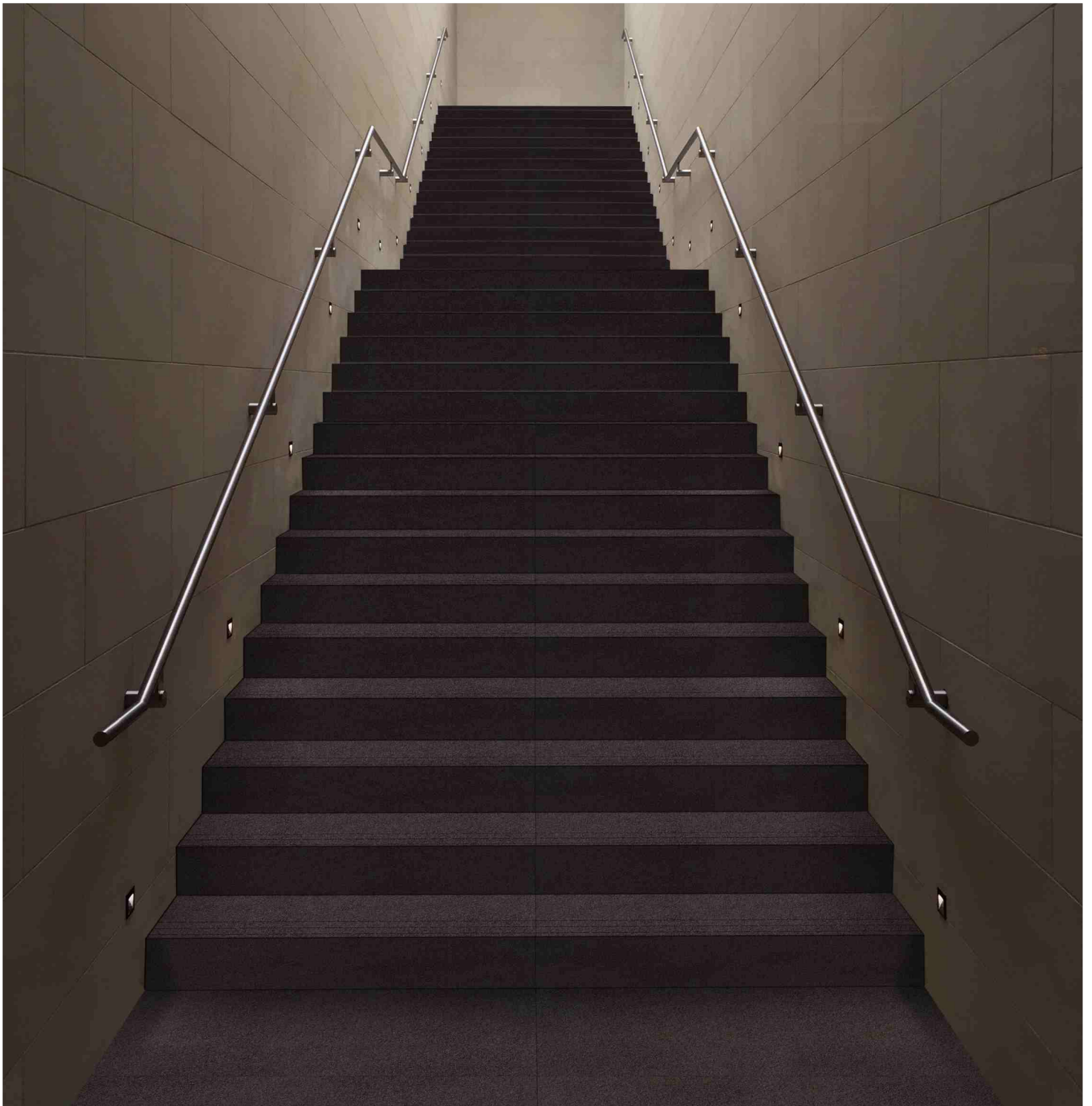
Stain  
resistance



Resistance  
to frost







Magic Almond - S



Magic Almond - R

**FULL BODY  
STEP & RISER**

also available sizes  
120 x 30cm | 120 x 20cm  
100x30cm | 100x20cm



Impact strength  
and stress resistance



Resistance  
to chemicals



Wear resistance



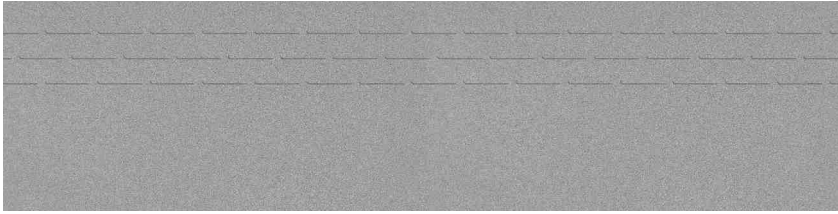
Scratching  
resistance



Stain  
resistance



Resistance  
to frost



Magic Corn Silk - S



Magic Corn Silk - R

**FULL BODY**  
**STEP & RISER**

also available sizes  
120 x 30cm | 120 x 20cm  
100x30cm | 100x20cm



Impact strength  
and stress resistance



Resistance  
to chemicals



Wear resistance



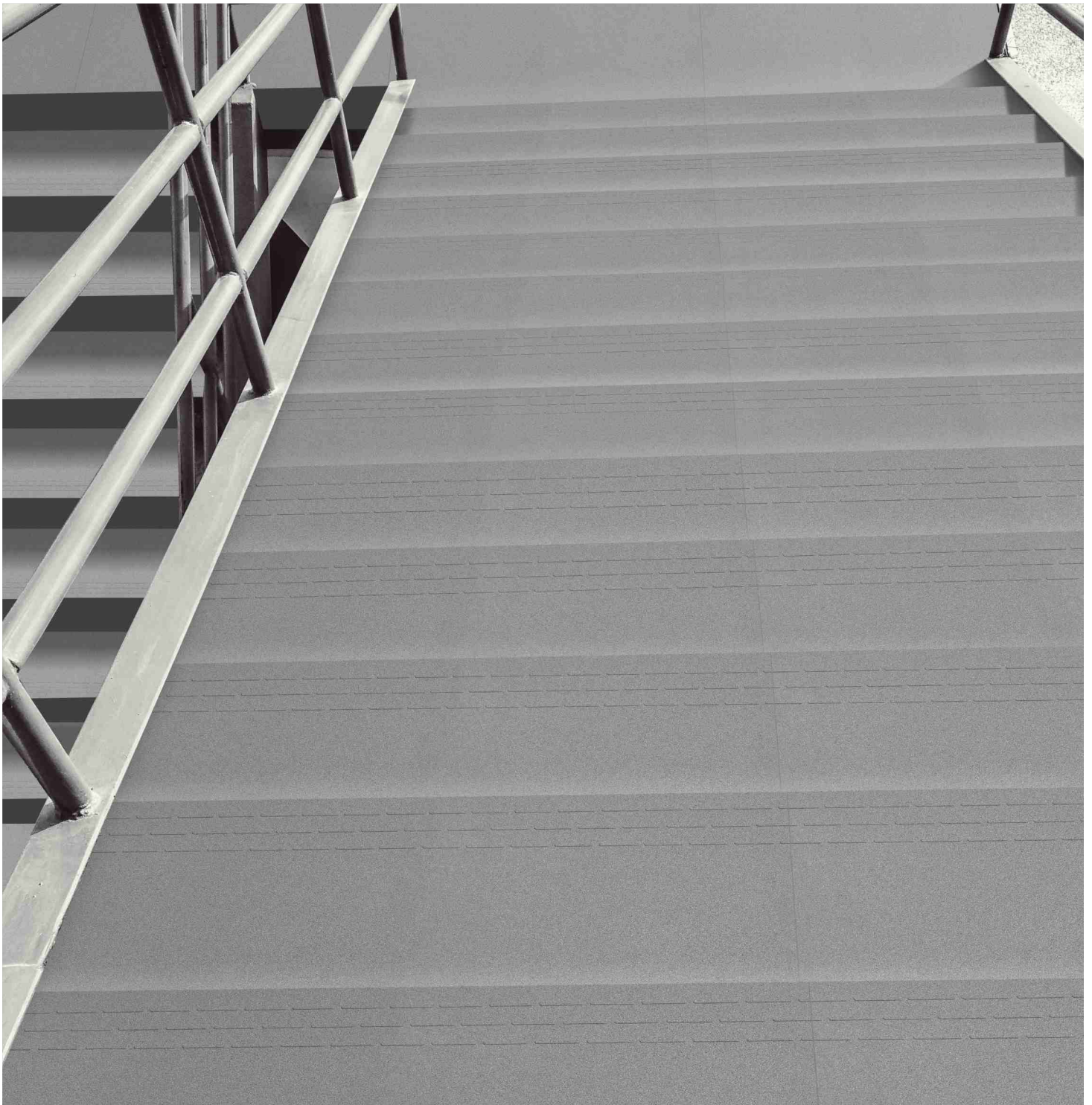
Scratching  
resistance



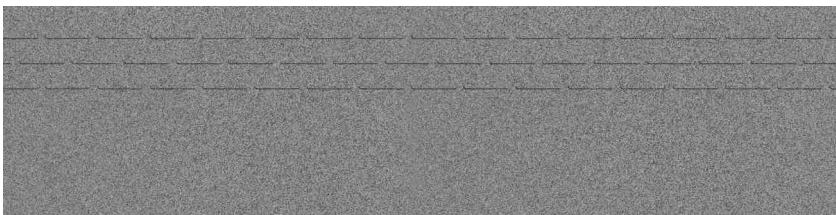
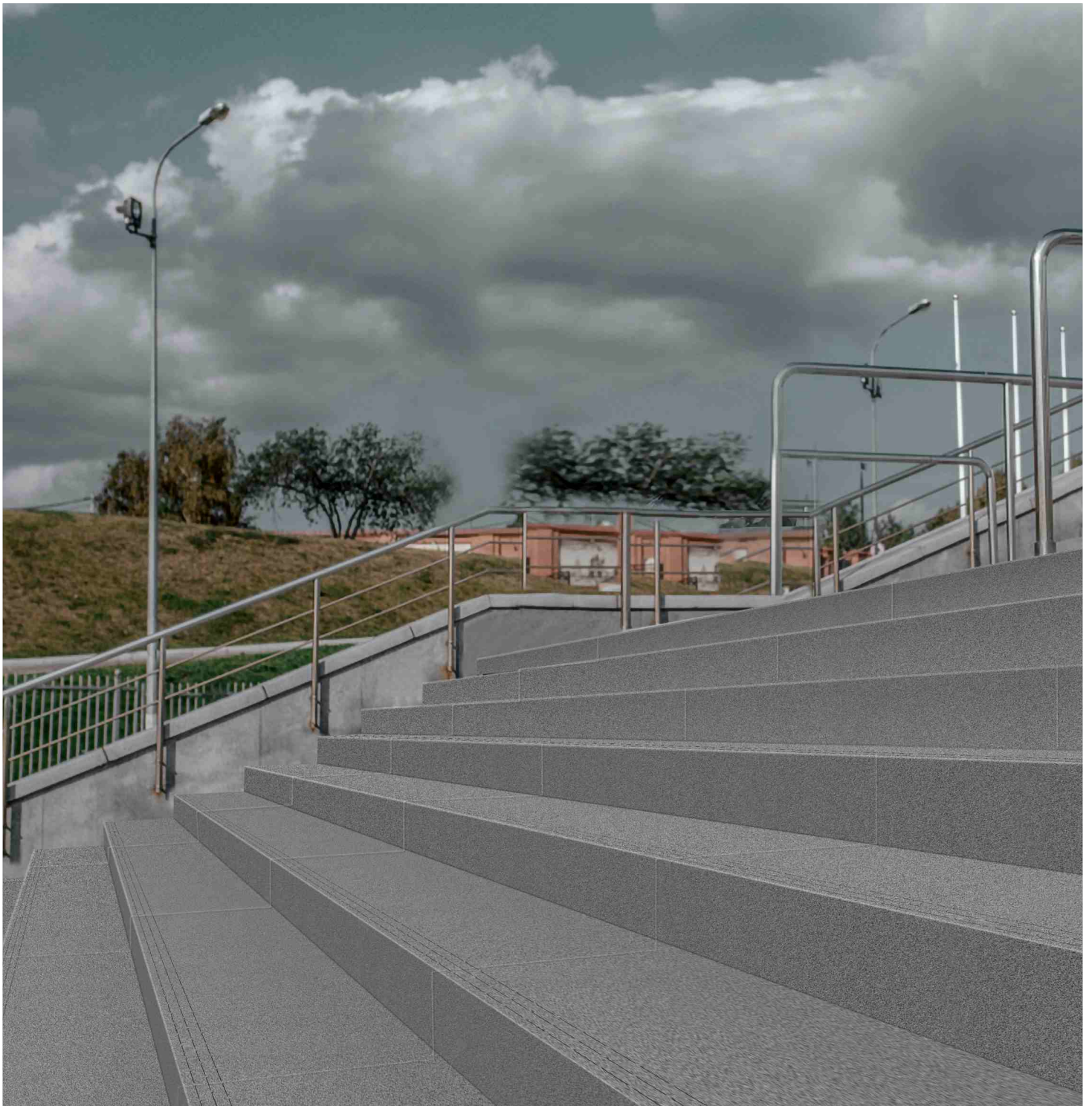
Stain  
resistance



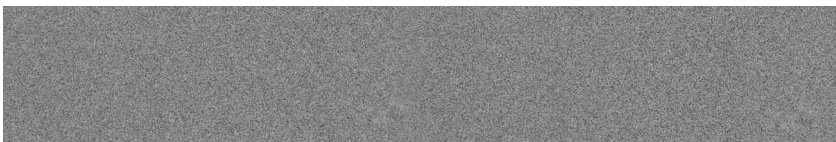
Resistance  
to frost







**Magic Avario - S**

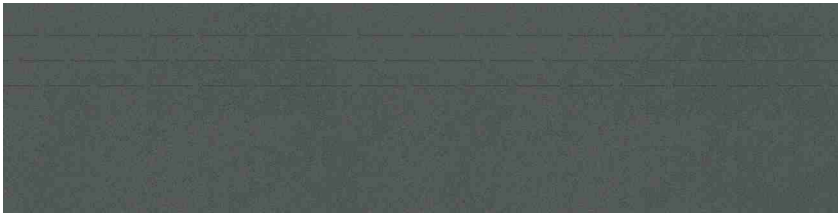


**Magic Avario - R**

**FULL BODY  
STEP & RISER**

also available sizes  
120 x 30cm | 120 x 20cm  
100x30cm | 100x20cm





Magic Cotta - S



Magic Cotta - R

## **FULL BODY STEP & RISER**

also available sizes  
120 x 30cm | 120 x 20cm  
100x30cm | 100x20cm



Impact strength  
and stress resistance



Resistance  
to chemicals



Wear resistance



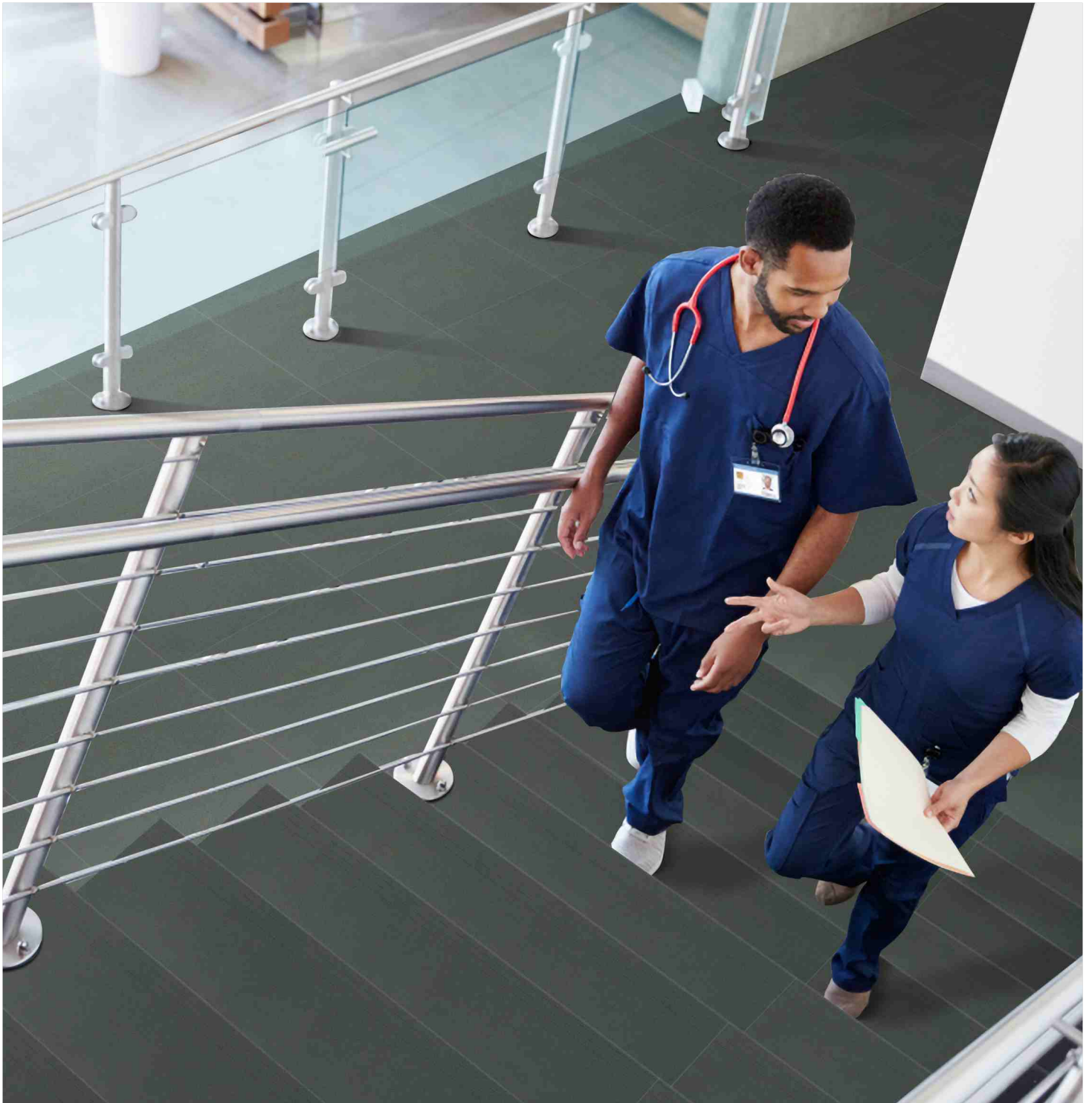
Scratching  
resistance



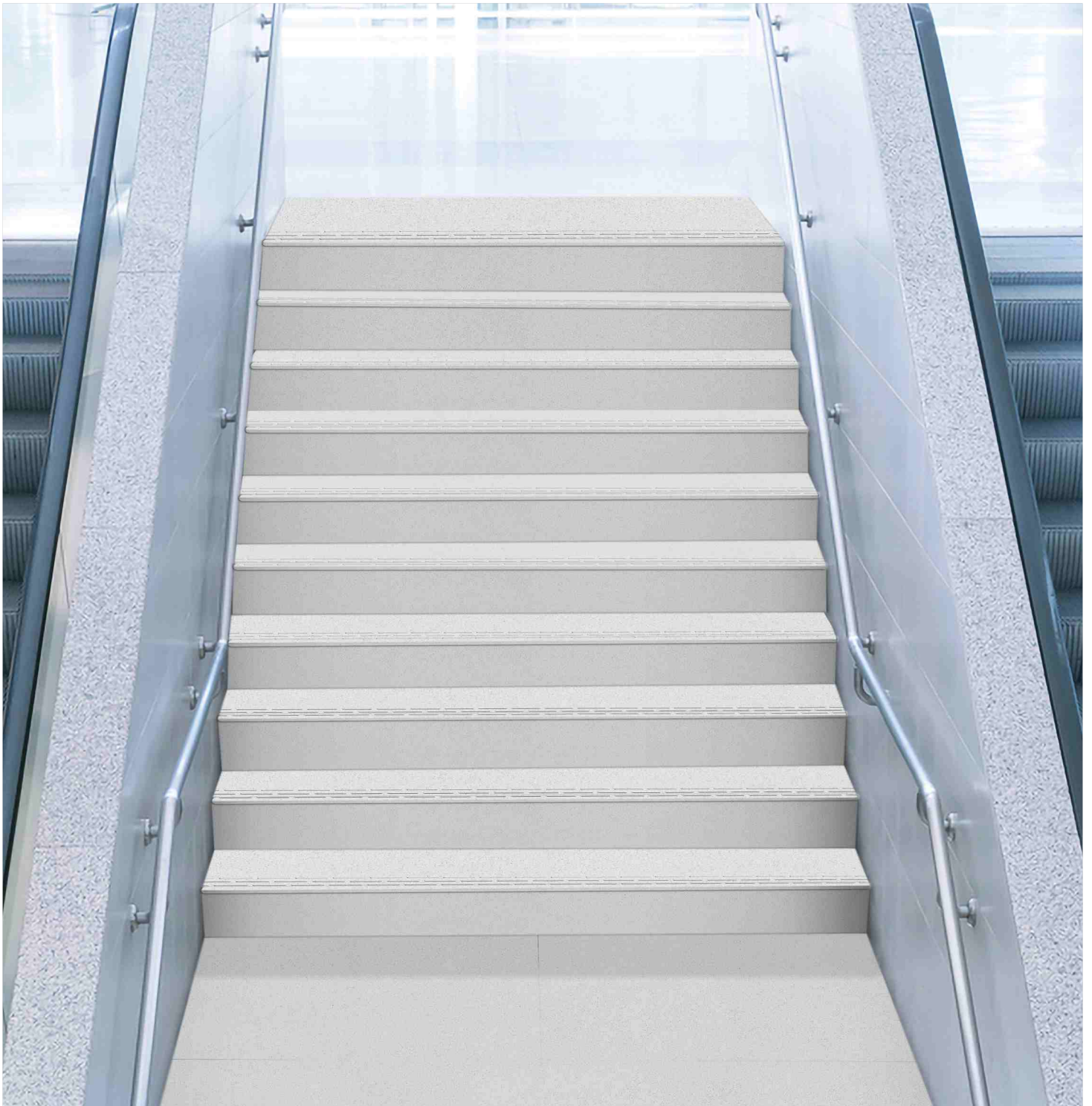
Stain  
resistance



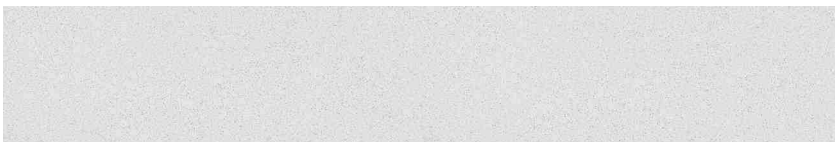
Resistance  
to frost







Magic Blanco - S



Magic Blanco - R

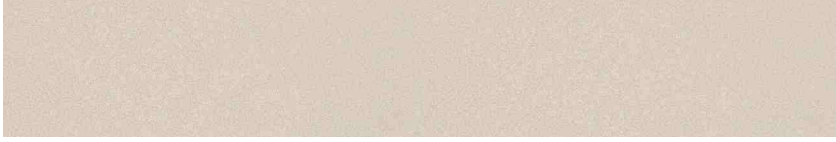
**FULL BODY  
STEP & RISER**

also available sizes  
120 x 30cm | 120 x 20cm  
100x30cm | 100x20cm





Magic Gold - S



Magic Gold - R

**FULL BODY**  
**STEP & RISER**

also available sizes  
120 x 30cm | 120 x 20cm  
100x30cm | 100x20cm



Impact strength  
and stress resistance



Resistance  
to chemicals



Wear resistance



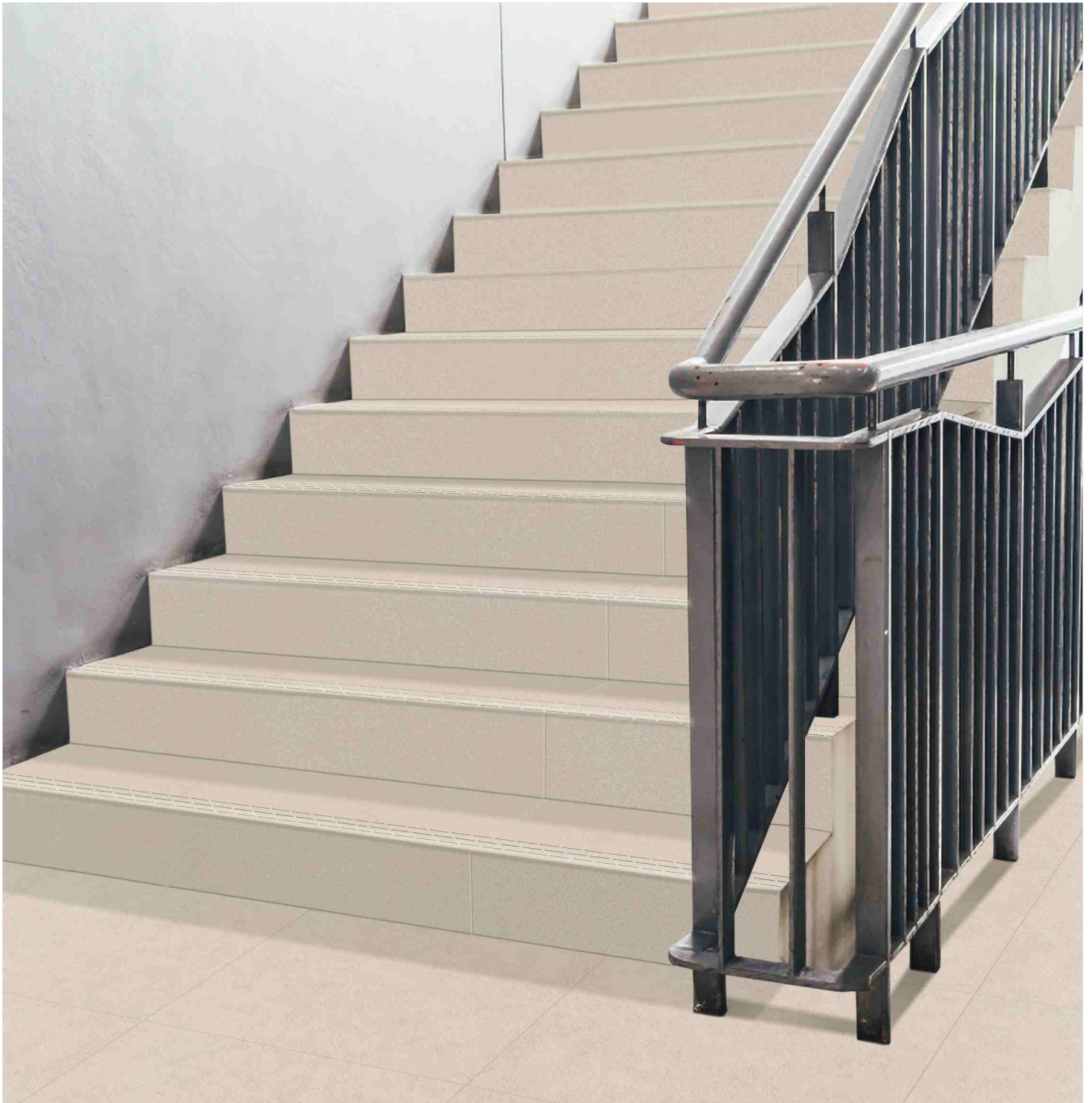
Scratching  
resistance



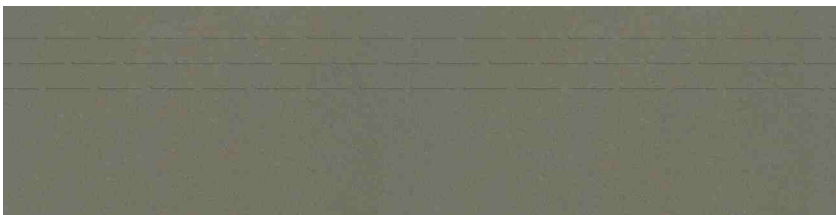
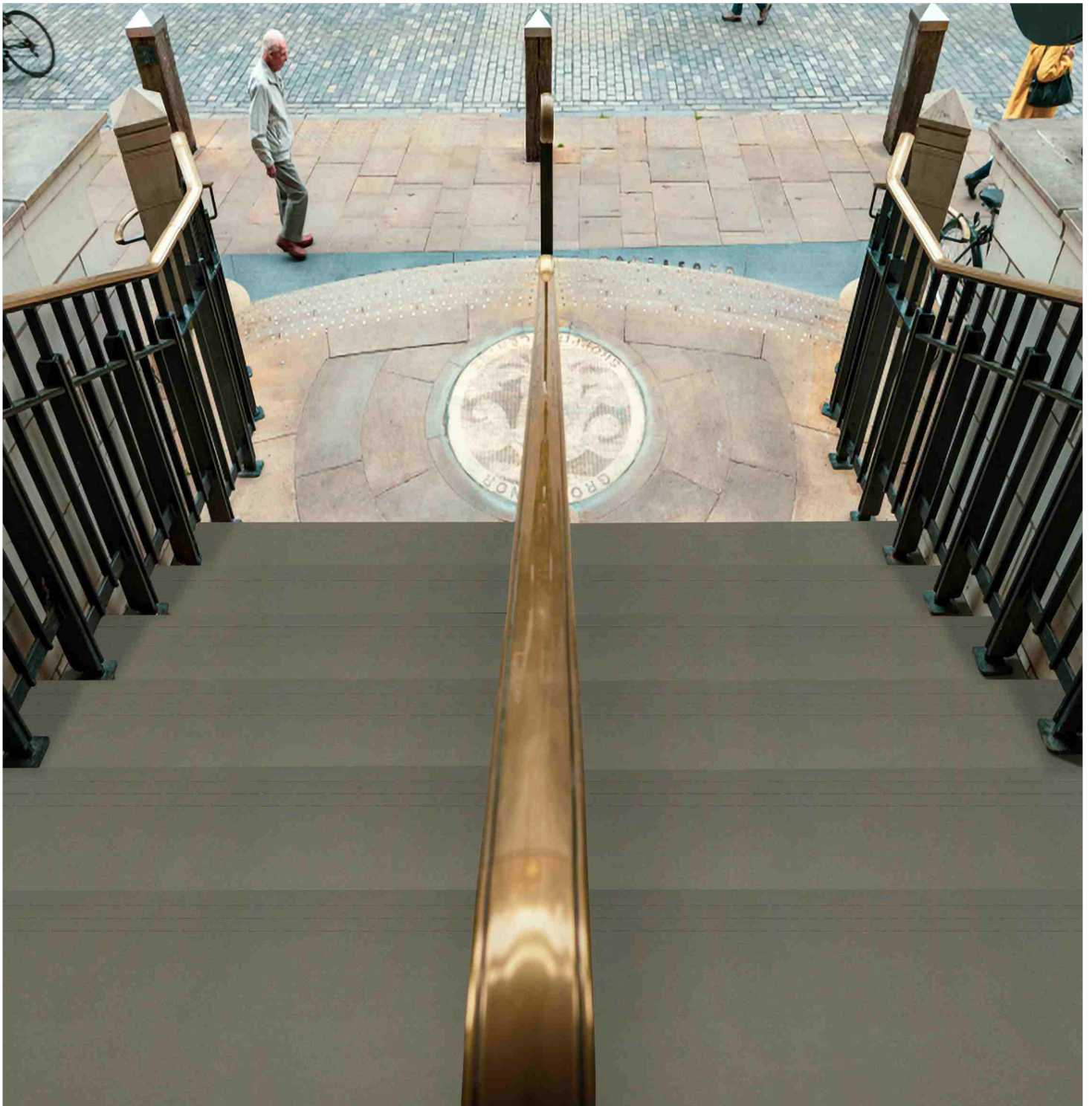
Stain  
resistance



Resistance  
to frost







Magic Champion - S



Magic Champion - R

**FULL BODY  
STEP & RISER**

also available sizes

120 x 30cm | 120 x 20cm

100x30cm | 100x20cm



Impact strength  
and stress resistance

Resistance  
to chemicals

Wear resistance

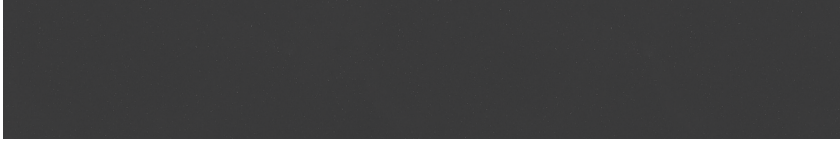
Scratching  
resistance

Stain  
resistance

Resistance  
to frost



**Magic Graffty - S**



**Magic Graffty - R**

**FULL BODY  
STEP & RISER**

also available sizes  
120 x 30cm | 120 x 20cm  
100x30cm | 100x20cm



Impact strength  
and stress resistance



Resistance  
to chemicals



Wear resistance



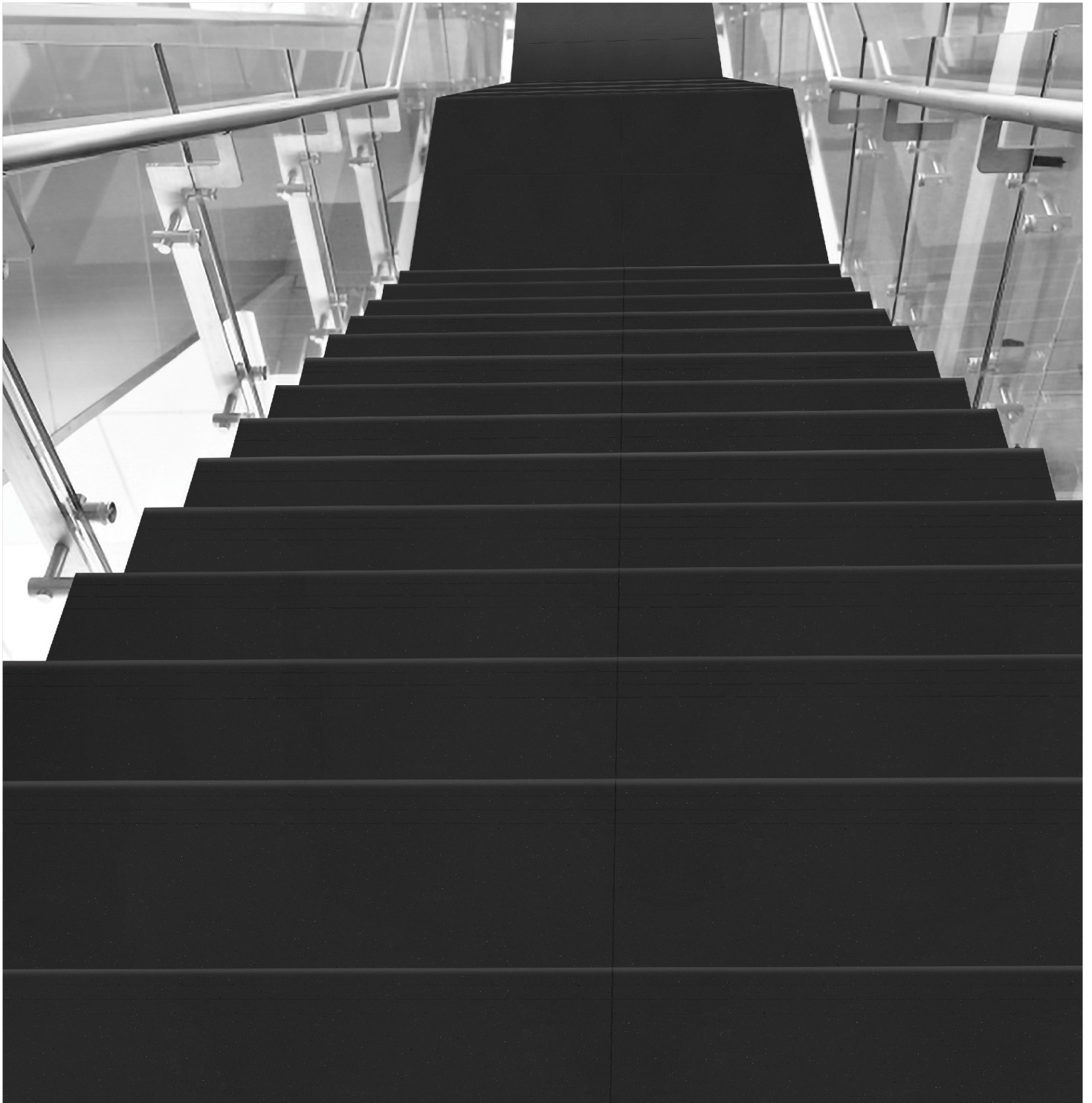
Scratching  
resistance



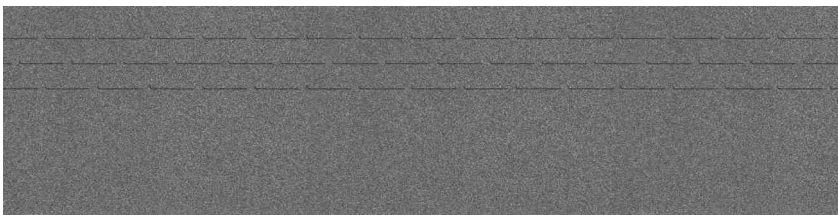
Stain  
resistance



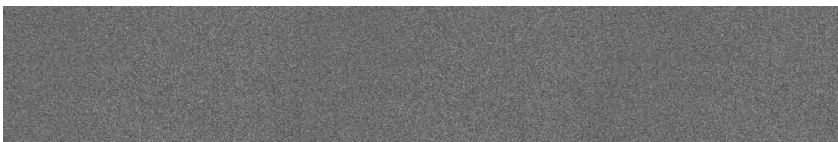
Resistance  
to frost







Magic Gray - S



Magic Gray - R

**FULL BODY**  
**STEP & RISER**

also available sizes  
120 x 30cm | 120 x 20cm  
100x30cm | 100x20cm

-  Impact strength and stress resistance
-  Resistance to chemicals
-  Wear resistance
-  Scratching resistance
-  Stain resistance
-  Resistance to frost



Magic Noce - S



Magic Noce - R

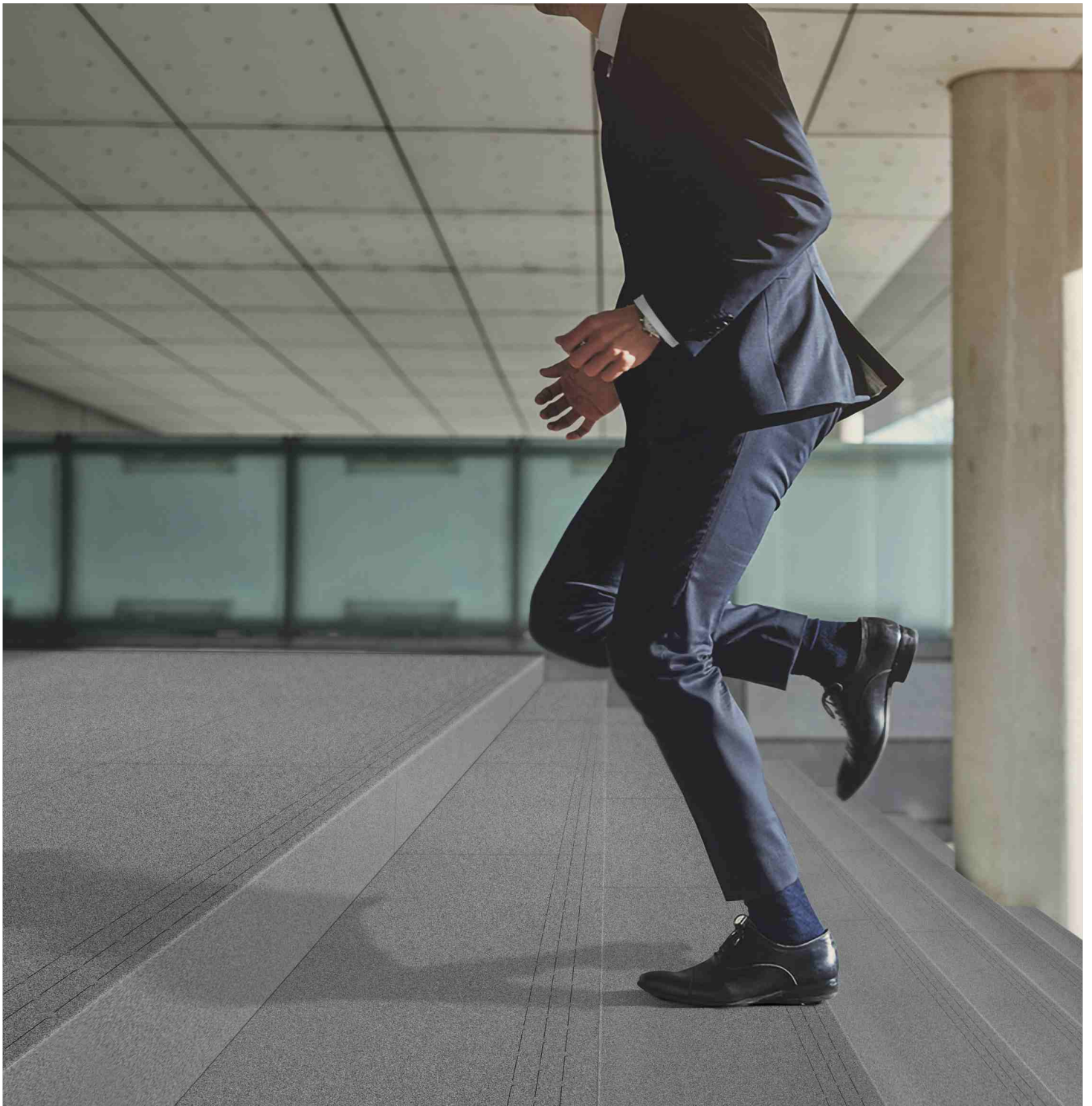
# **FULL BODY STEP & RISER**

also available sizes  
**120 x 30cm | 120 x 20cm**  
**100x30cm | 100x20cm**

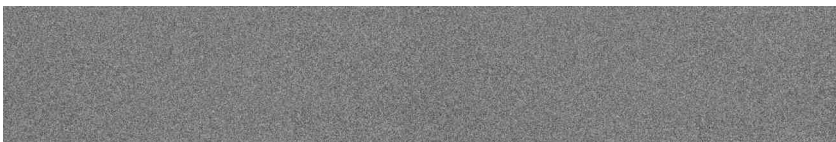
-  Impact strength and stress resistance
-  Resistance to chemicals
-  Wear resistance
-  Scratching resistance
-  Stain resistance
-  Resistance to frost







Magic Gris - S



Magic Gris - S

**FULL BODY  
STEP & RISER**

also available sizes  
120 x 30cm | 120 x 20cm  
100x30cm | 100x20cm

-  Impact strength and stress resistance
-  Resistance to chemicals
-  Wear resistance
-  Scratching resistance
-  Stain resistance
-  Resistance to frost





**Magic Peach - S**



**Magic Peach - R**

**FULL BODY**  
**STEP & RISER**

also available sizes  
**120 x 30cm | 120 x 20cm**  
**100x30cm | 100x20cm**



Impact strength  
and stress resistance



Resistance  
to chemicals



Wear resistance



Scratching  
resistance



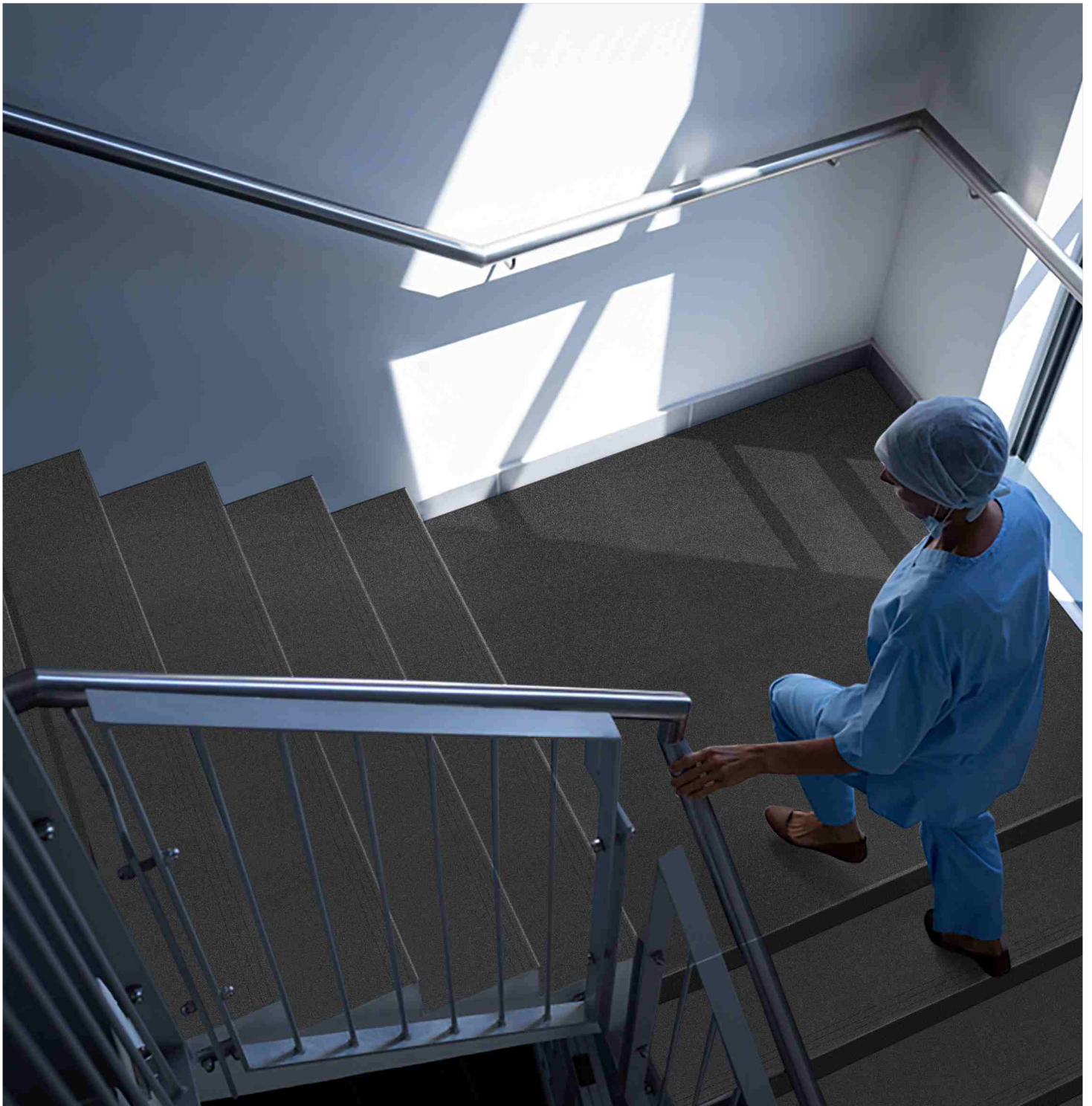
Stain  
resistance



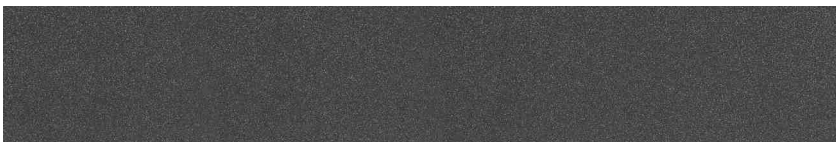
Resistance  
to frost







Magic Iron - S

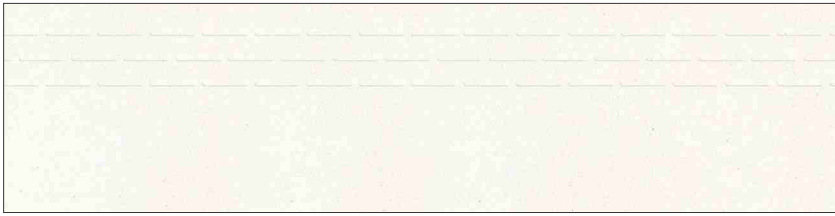


Magic Iron - R

**FULL BODY**  
**STEP & RISER**

also available sizes  
120 x 30cm | 120 x 20cm  
100x30cm | 100x20cm

-  Impact strength and stress resistance
-  Resistance to chemicals
-  Wear resistance
-  Scratching resistance
-  Stain resistance
-  Resistance to frost



Magic Polo - S



Magic Polo - R

## **FULL BODY STEP & RISER**

also available sizes

120 x 30cm | 120 x 20cm

100x30cm | 100x20cm



Impact strength  
and stress resistance



Resistance  
to chemicals



Wear resistance



Scratching  
resistance



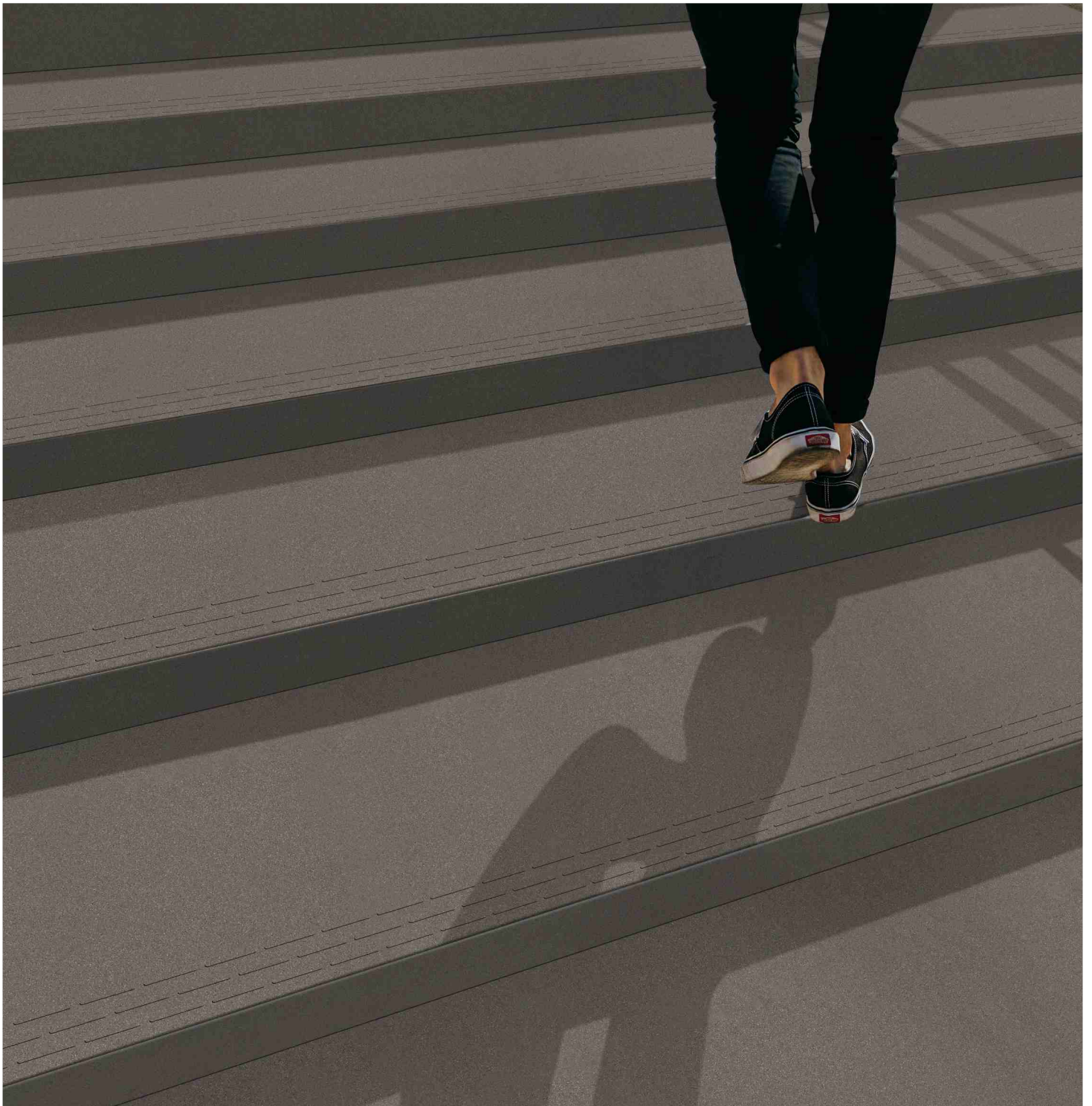
Stain  
resistance



Resistance  
to frost







**Magic Mashroom - S**



**Magic Mashroom - R**

**FULL BODY  
STEP & RISER**

also available sizes  
**120 x 30cm | 120 x 20cm**  
**100x30cm | 100x20cm**

-   
Impact strength  
and stress resistance
-   
Resistance  
to chemicals
-   
Wear resistance
-   
Scratching  
resistance
-   
Stain  
resistance
-   
Resistance  
to frost





Magic Sand - S



Magic Sand - R

## ***FULL BODY*** **STEP & RISER**

also available sizes  
120 x 30cm | 120 x 20cm  
100x30cm | 100x20cm



Impact strength  
and stress resistance



Resistance  
to chemicals



Wear resistance



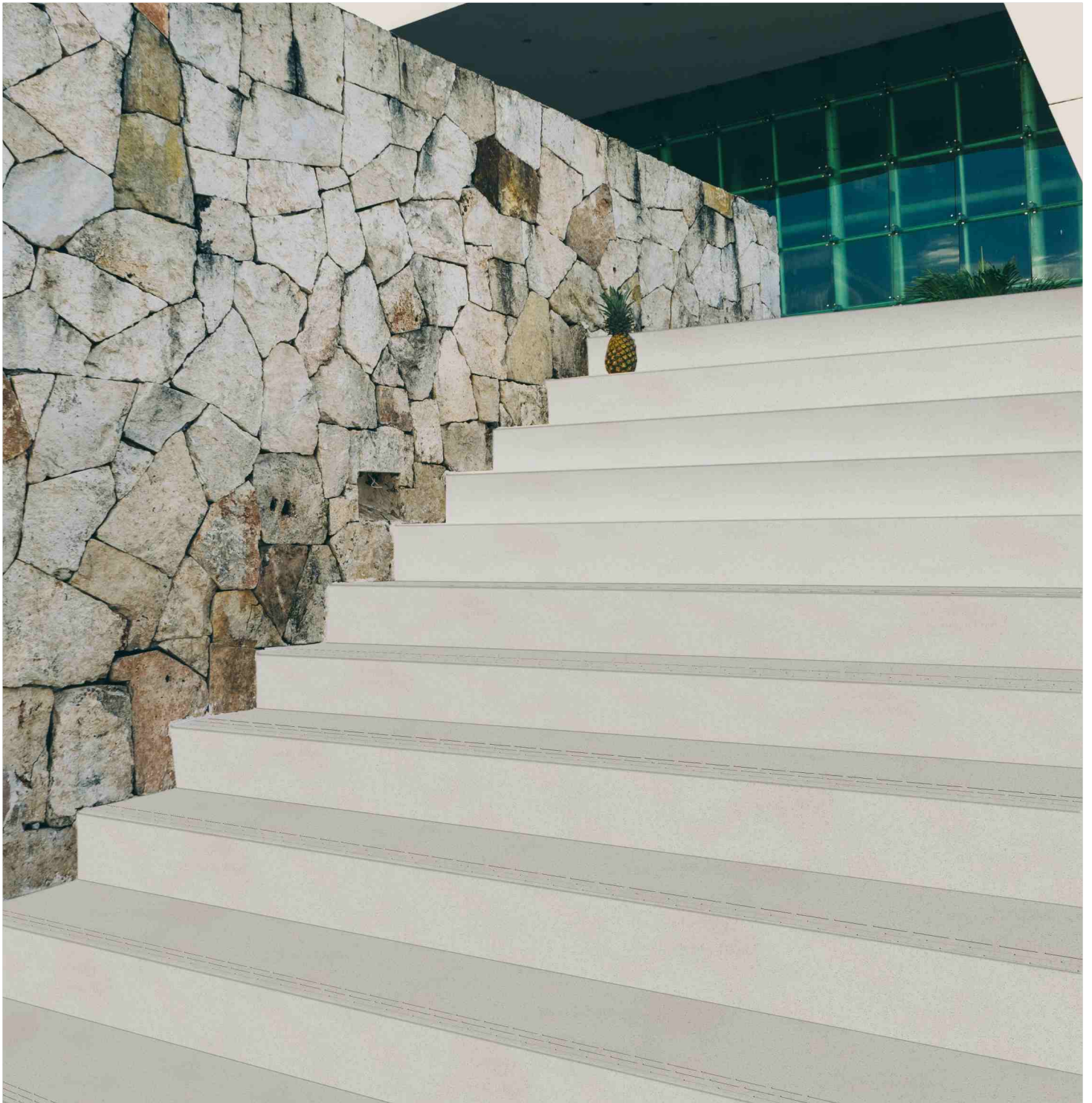
Scratching  
resistance



Stain  
resistance



Resistance  
to frost







Magic Varde - S



Magic Varde - R

**FULL BODY  
STEP & RISER**

also available sizes  
120 x 30cm | 120 x 20cm  
100x30cm | 100x20cm





Magic Silver - S



Magic Silver - R

## **FULL BODY STEP & RISER**

also available sizes  
120 x 30cm | 120 x 20cm  
100x30cm | 100x20cm



Impact strength  
and stress resistance



Resistance  
to chemicals



Wear resistance



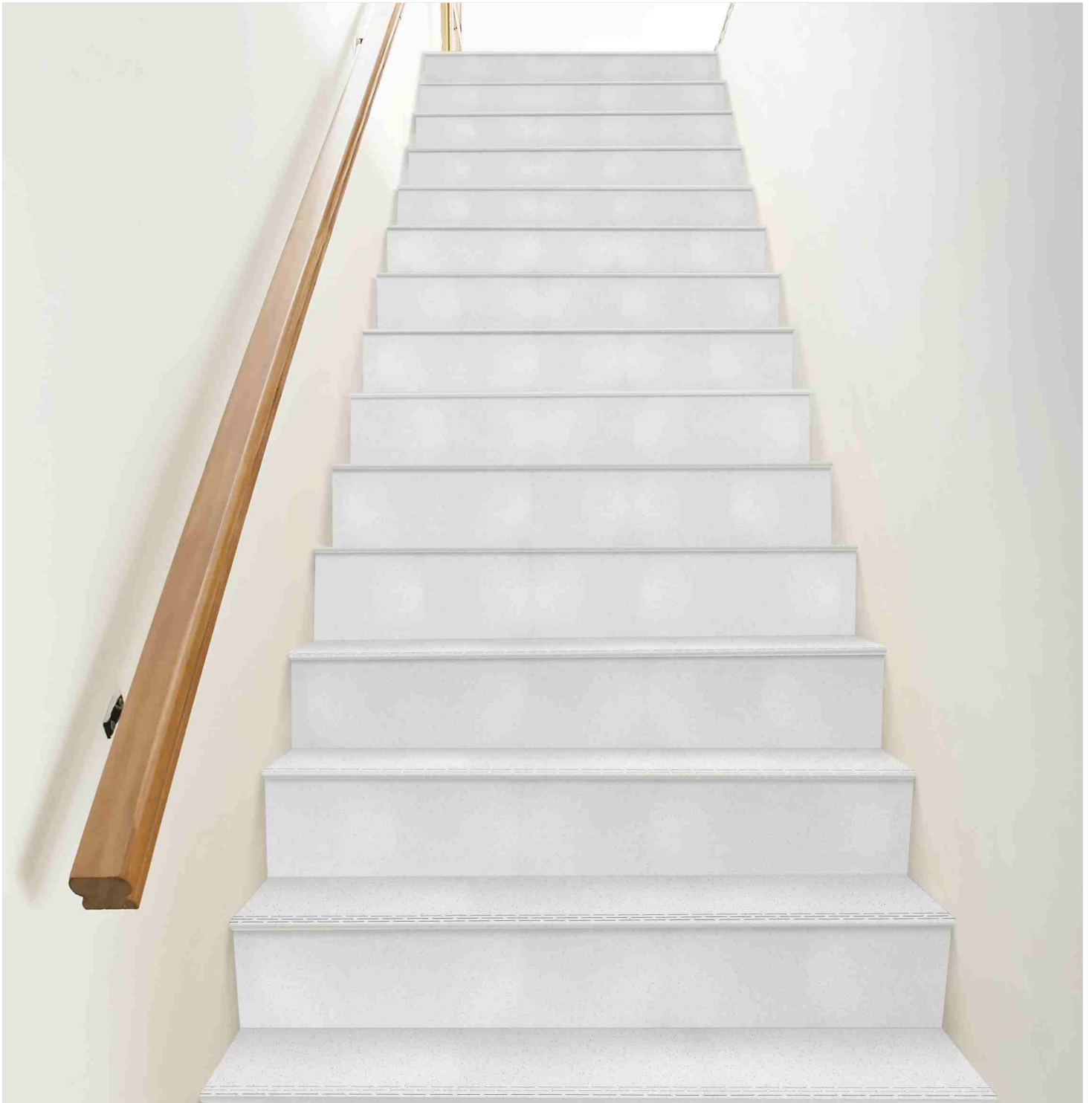
Scratching  
resistance



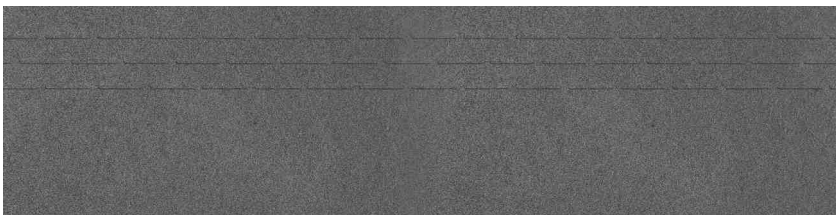
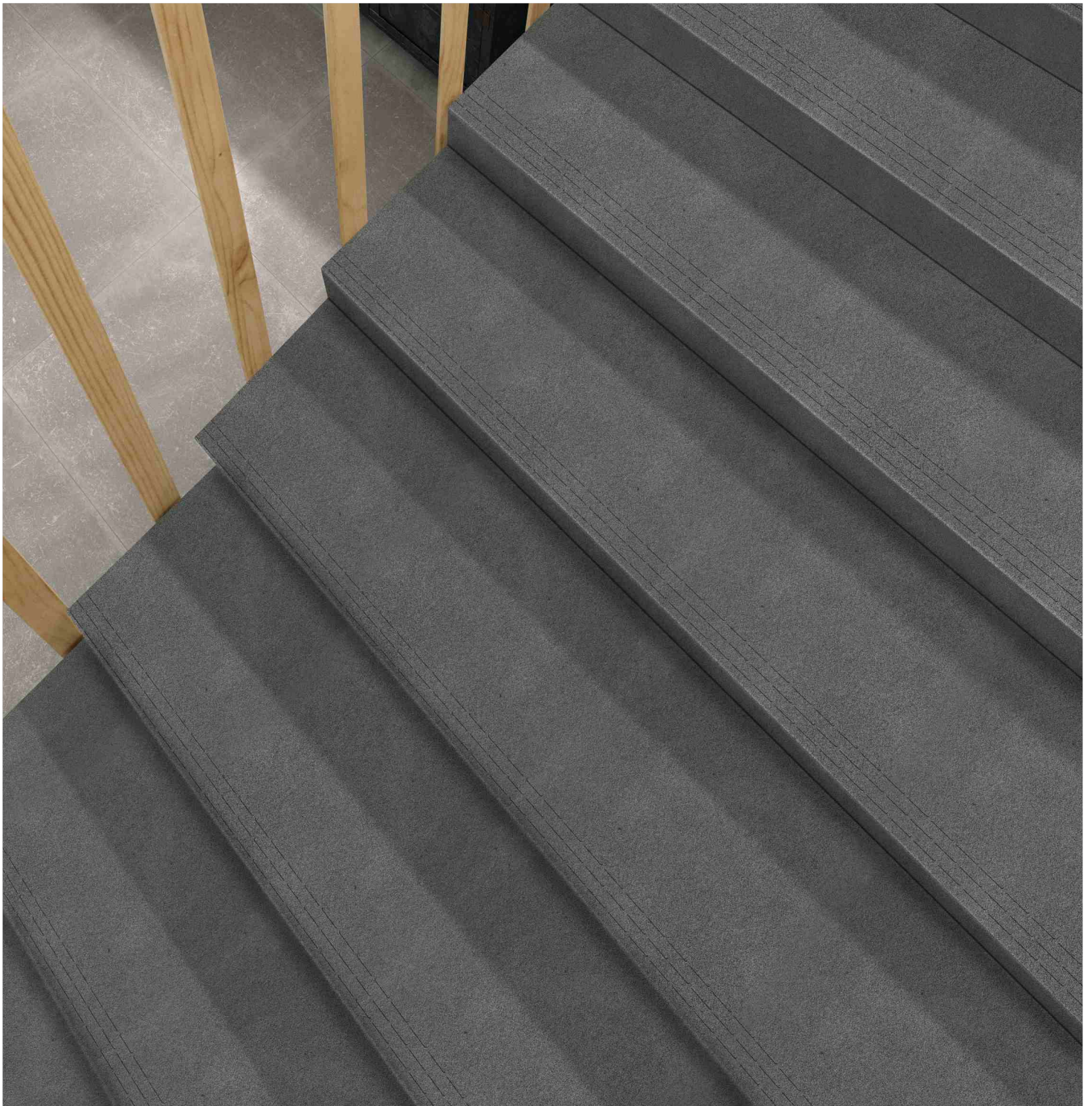
Stain  
resistance



Resistance  
to frost







Samoy Magic Nero - S



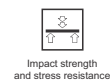
Samoy Magic Nero - R

**FULL BODY**  
**STEP & RISER**

also available sizes

120 x 30cm | 120 x 20cm

100x30cm | 100x20cm



Impact strength  
and stress resistance



Resistance  
to chemicals



Wear resistance



Scratching  
resistance

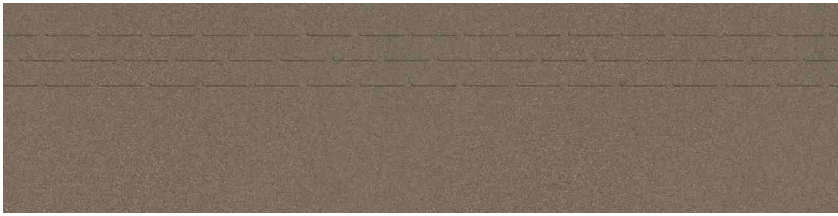


Stain  
resistance



Resistance  
to frost





**Magic Terra - S**



*Magic Terra - R*

**FULL BODY  
STEP & RISER**

also available sizes  
**120 x 30cm | 120 x 20cm**  
**100x30cm | 100x20cm**



Impact strength  
and stress resistance



Resistance  
to chemicals



Wear resistance



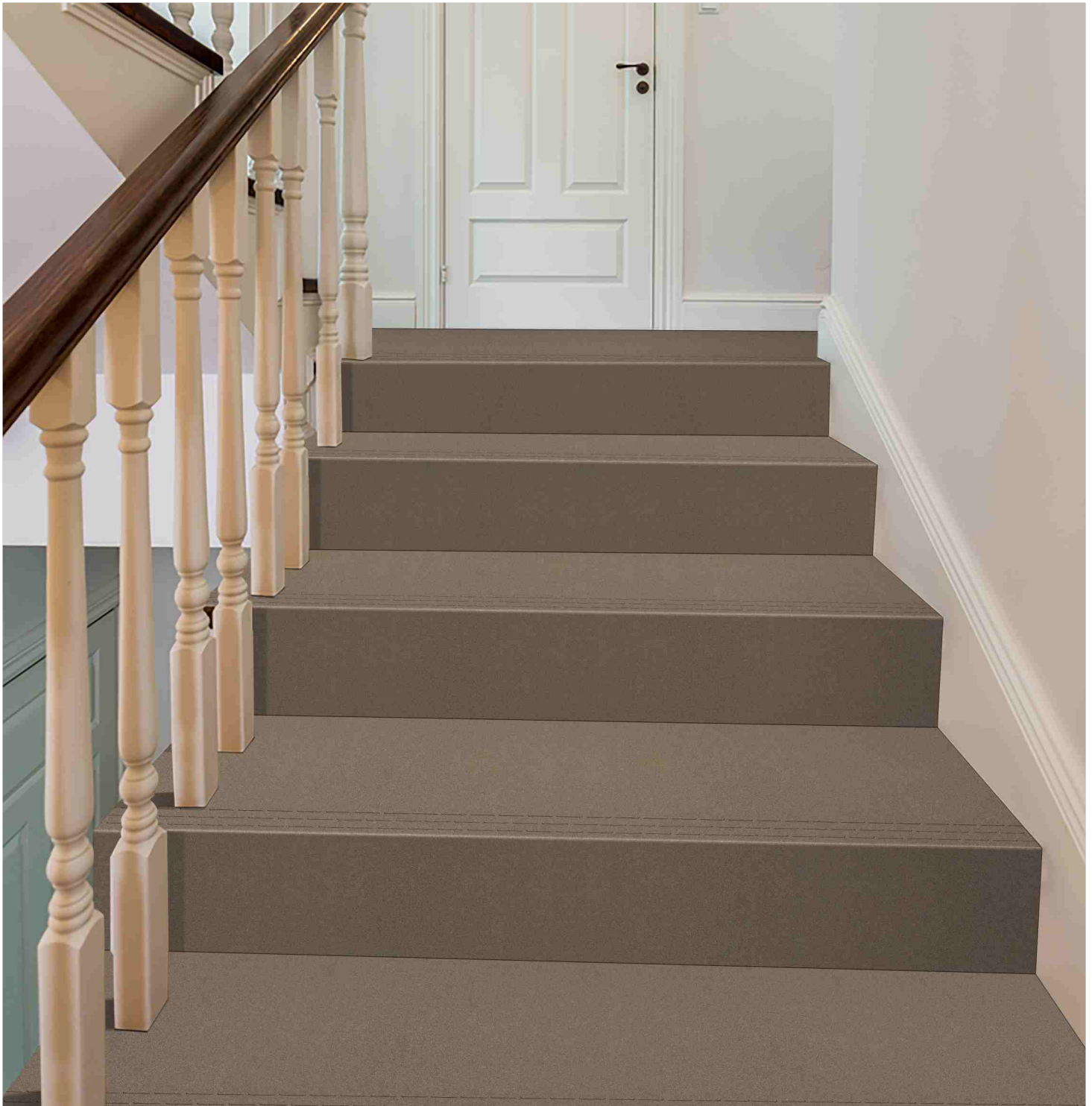
Scratching  
resistance



Stain  
resistance



Resistance  
to frost





## TECHNICAL SPECIFICATIONS

| S. No.                        | Test Description  | Test Standard                          |  | Stepping Stone / Meteor 1.5 cm                              | Test Method  |
|-------------------------------|---|--|--|---|--|
|                               |   | IS 4457:2007                           | ISO 13006/EN 14411 Gr. Bla             |   |  |
| <b>Dimensional Properties</b> |   |  |  |   |  |
| 1                             | Deviation in Length & Width                             | ± 0.75%                                | ± 0.6%                                 | ± 0.1%  | IS 4457:2007 Annex B /<br>IS 15622:2006 /<br>ISO 10545-2 |
| 2                             | Deviation in Thickness                                  | ± 5%                                   | ± 5%                                   | ± 5%  |  |
| 3                             | Straightness of Sides                                   | ± 0.5%                                 | ± 0.5%                                 | ± 0.1%  |  |
| 4                             | Rectangularity  | ± 0.6                                  | ± 0.6                                  | ± 0.1%  |  |
| 5                             | Surface Flatness  | ± 0.5%                                 | ± 0.5%                                 | ± 0.2%  |  |
| 6                             | Surface Quality   |  | Min 95%                                | Minimum 95% of the tiles shall be free from visible defects |  |
| <b>Physical Properties</b>    |   |  |  |   |  |
| 7                             | Water Absorption  | < 0.5%                                 | < 0.5%                                 | < 0.05%   | IS 4457:2007 Annex C /<br>IS 15622:2006 / ISO 10545-3    |
| 8                             | Mohs Hardness   |  | >3                                     | >6  | IS 13630 Part 13 / En101                                 |
| 9                             | Flexural strength (Average MOR)                         | >35 N/mm <sup>2</sup>                  | >35 N/mm <sup>2</sup>                  | >38 N/mm <sup>2</sup>                                       | IS 4457:2007 Annex D /<br>IS 15622:2006 / ISO 10545-4    |
| 10                            | Breaking Strength                                       | >1300N                                 | >1300N                                 | >6000N  |  |
| 11                            | Abrasion Resistance/<br>Deep Abrasion                   | <175 mm <sup>3</sup>                   |  | <144 mm <sup>3</sup>  | IS 4457:2007 Annex E /<br>IS 15622:2006                  |
| 12                            | Skid Resistance   | >0.4                                   |  | >0.6  | ASTM C1028-7   |
| 13                            | Density (gm/cc)   | >2                                     |  | >2.2  | ASTM C373 - 16   |
| 14                            | Moisture Expansion                                      | NIL                                    |  | NIL   | ISO 10545-10   |
| <b>Chemical Properties</b>    |   |  |  |   |  |
| 15                            | Resistance to household chemicals & swimming pool salts | Resistant                              | Resistant                              | Resistant   | IS 4457:2007 Annex F /<br>IS 15622:2006 / ISO 10545-13   |
| 16                            | Resistance to Conc. Acid (wt. Loss)                     | <1.5%                                  |  | ≤ 1%  | IS 4457:2007 Annex G                                     |
| 17                            | Stain Resistance  | Resistant                              | Resistant                              | Min Class 3   | ISO 10545-14   |
| 18                            | Colour Resistance to UV Light                           |  | Resistant                              | Resistant   | DIN 51094  |
| 19                            | Frost Resistance  |  | Frost Proof                            | Frost Proof   | ISO 10545-12   |
| <b>Thermal Properties</b>     |   |  |  |   |  |
| 20                            | Thermal Expansion                                       | ≤ 9 × 10 <sup>-6</sup> K <sup>-1</sup> | ≤ 9 × 10 <sup>-6</sup> K <sup>-1</sup> | ≤ 9 × 10 <sup>-6</sup> K <sup>-1</sup>                      | ISO 10545-8  |
| 21                            | Thermal Shock Resistance                                | No damage                              | No damage                              | No damage   | ISO 10545-9  |

## PACKING DETAILS

| SIZE (MM)   | CRATE SIZE (INCH.) | PCS Per Box | WEIGHT of Box Approx | BOX Per Crate | CRATE Per Container |
|-------------|--------------------|-------------|----------------------|---------------|---------------------|
| 300x1200    | 27x48              | 4           | 36                   | 22            | 20                  |
| 200x1200    | 27x48              | 4           | 19                   | 33            | 13                  |
|             |                    |             |                      | 11            | 1                   |
| 300x1200x16 | 27x48              | 2           | 26                   | 26            | 20                  |
|             |                    |             |                      | 13            | 1                   |
| 200x1200x16 | 27x48              | 2           | 14                   | 39            | 13                  |
| 300x1000    | 27x40              | 4           | 31.5                 | 24            | 19                  |
| 200x1000    | 27x40              | 4           | 28.3                 | 36            | 12                  |
|             |                    |             |                      | 24            | 1                   |
| 300x1000x16 | 27x40              | 2           | 24                   | 26            | 19                  |
|             |                    |             |                      | 13            | 1                   |
| 200x1000x16 | 27x40              | 2           | 12.5                 | 39            | 13                  |